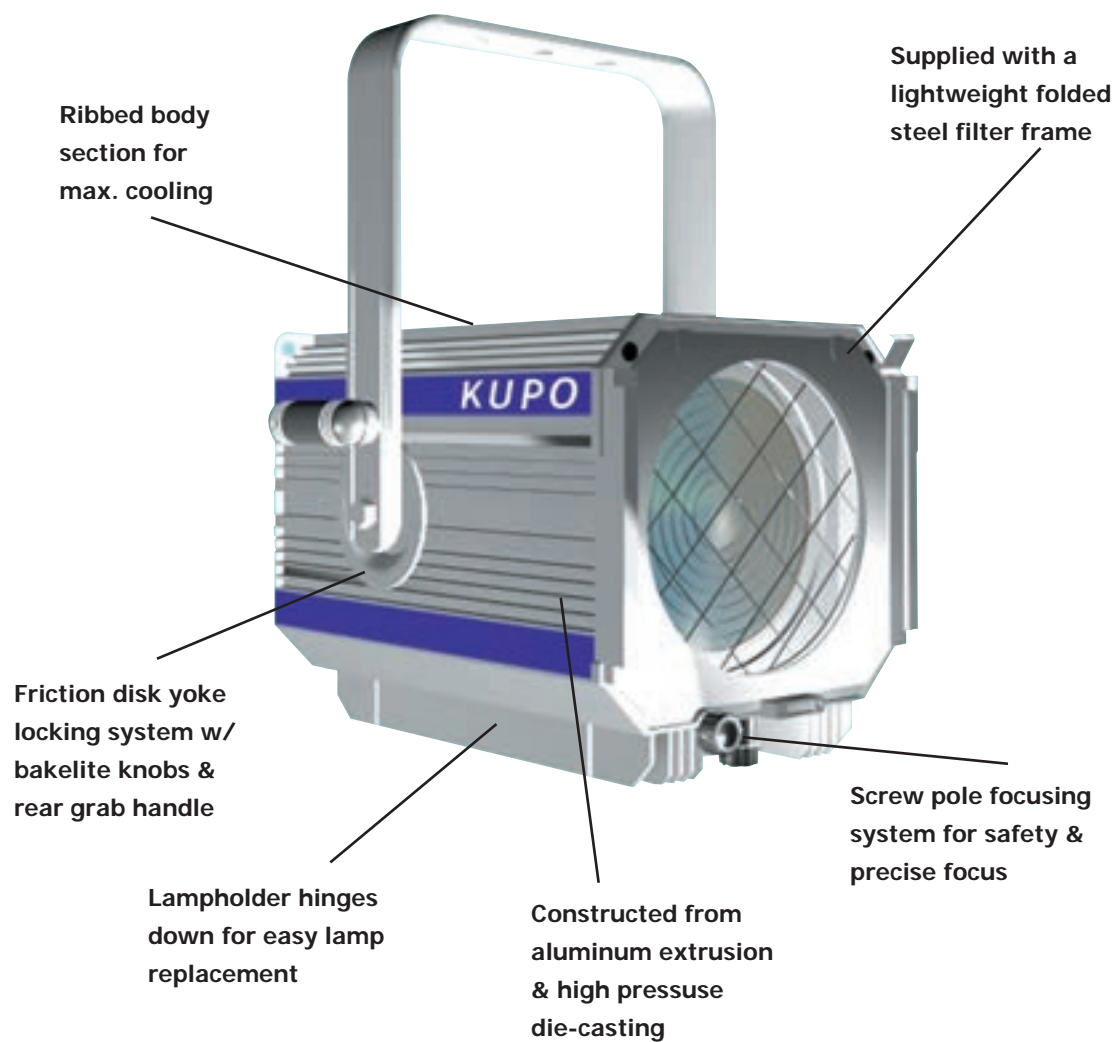


SPOTLIGHT

FRESNEL & PRISM CONVEX SPOTLIGHT

In theatre, most often used for top or back lighting, at medium throw distance.



FS & PS

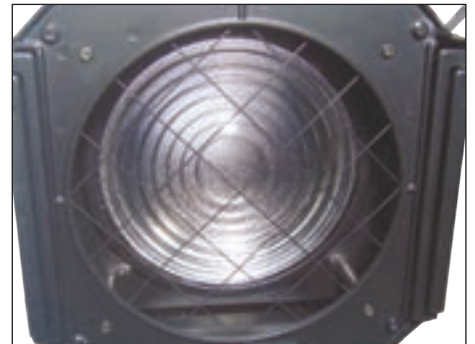
Fresnel is a focus spotlight used in theatre lighting. Its glass lens with concentric ripples which is visible on the front of the light is casting soft, even illumination across the light's beam. The housing is designed from aluminum extrusion and high pressure die-casting with ribbed body section for reducing heat and increasing the efficiency of a lamp. The U-shaped yoke is fixed at two points to the sides of the fixture. The stepped lens gives beam of light in wide and soft-edged, creating soft shadows. Kupo Fresnel use a spherical reflector, and with the lamp it will turn to be at the focus point in theatre.

Electrical Features

1. 65cm of 1.5mm 3-Core silicon rubber cable
2. Germany-made rugged ceramic lampholder
3. Lampholder: GX9.5 base for FS-1000/PS-1000;
Lamp holder: GY9.5 base for FS-500

Optical Features

1. Spherical reflector of polished anodized aluminum
2. Two focus knobs at front & rear to adjust from spot to flood focus
3. Fitted with white borosilicate glass lens with ingrained surface pattern



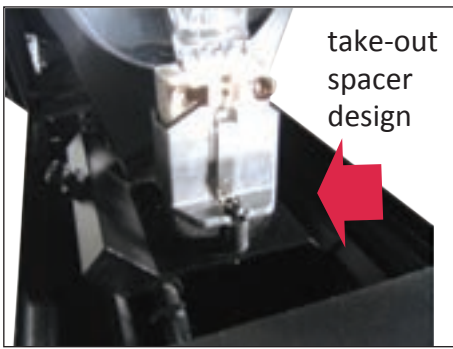
Features

1. A focus knob at rear for user to adjust at back. User can also control the direction with the rear handle. Rear ventilatin slot cools down the heat even the fixture in vertical position.
2. Another focus knob at front to let user adjust in front when needed.
3. The roll pin under the lampholder plate through end to front. This is how the front and rear knob could be used to adjust direction at the same time.
4. The positive yoke locking system at side housing help adjust the fixture in any position.
5. The hinge design make user replace the lamp and clean the reflector easily without any supporting tool.
6. The take-out spacer design makes a 1000W lamp function into 1,200W via take out the spacer. Same as 500W to 650W.
7. Excellent ventilation at the top of housing.

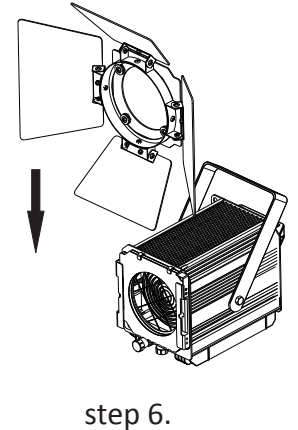
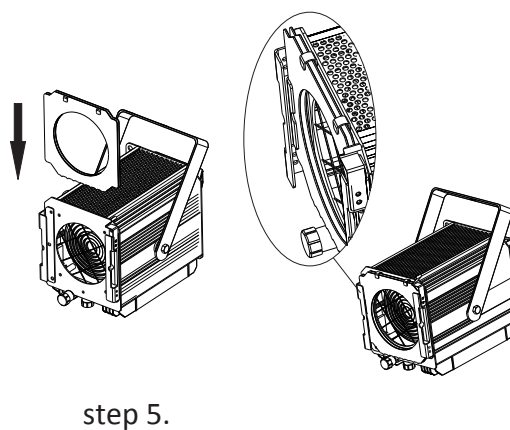
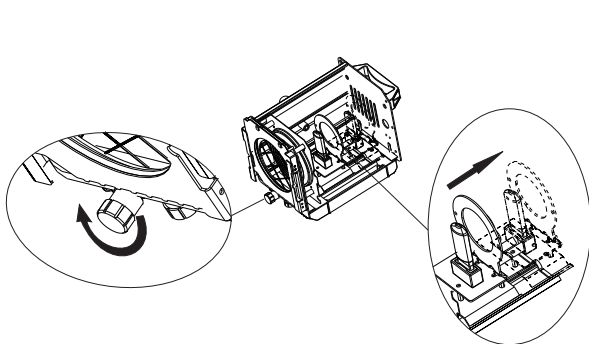
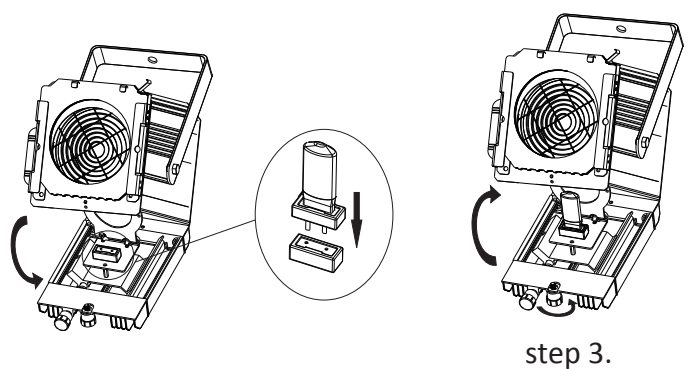
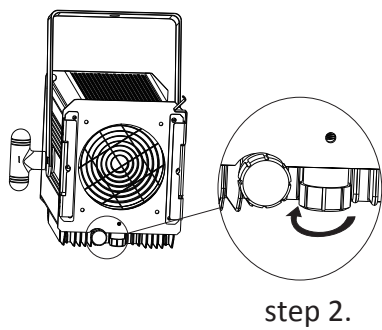
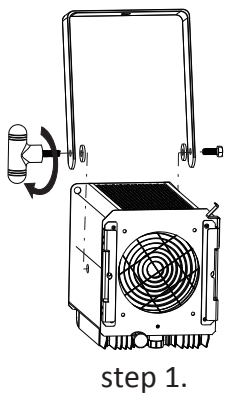
FS & PS

Features

- 8. The spring at side of front panel for efficiently setting the gel and color frame.
- 9. Lampholder and focusing assembly hinges down from body conveniently.
- 10. The hole on of the rear plate for safety cable easy access.

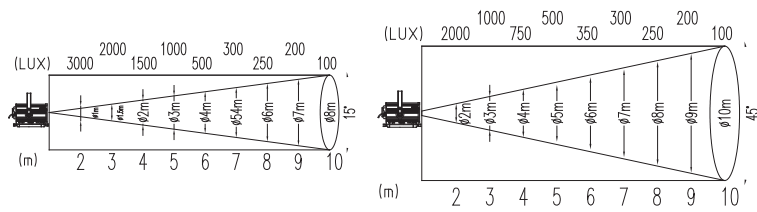
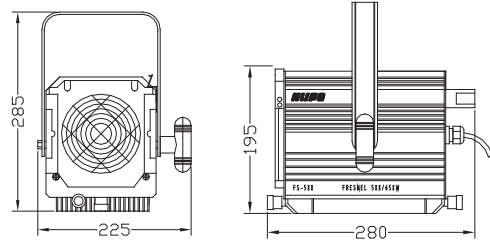


How to assemble?



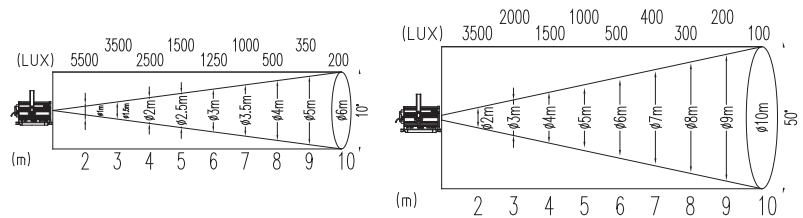
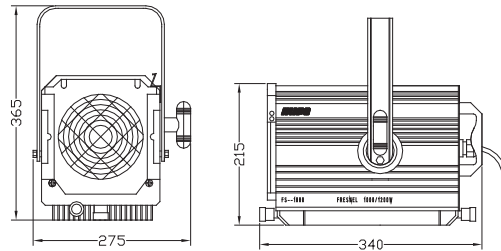
FS & PS

FS-500 Fresnel Spotlight 500/650W



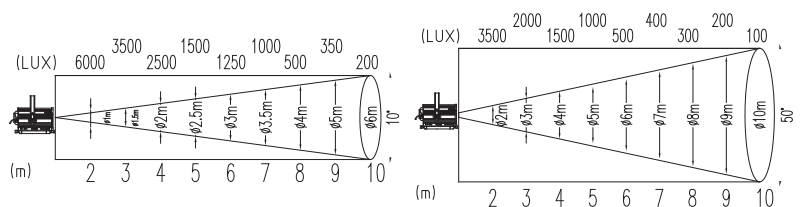
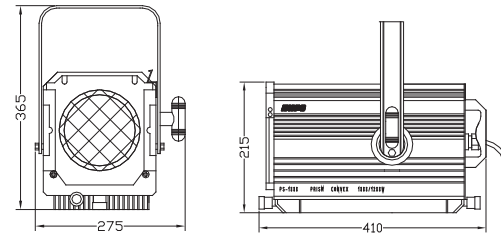
Photometric Data: Calculate for spot & flood focus from peak candela reading.

FS-1000 Fresnel Spotlight 1000/1200W



Photometric Data: Calculate for spot & flood focus from peak candela reading.

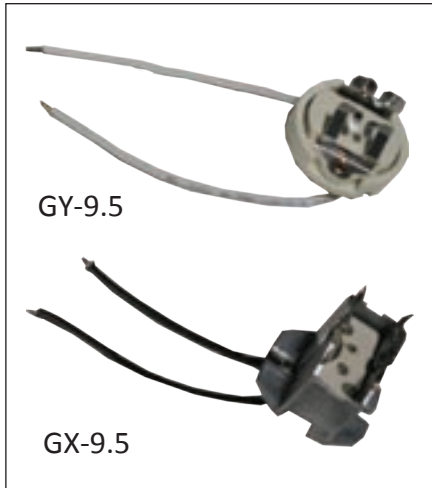
PS-1000 Prism Convex Spotlight 1000/1200W



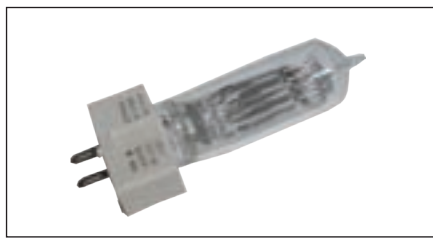
Photometric Data: Calculate for spot & flood focus from peak candela reading.

FS & PS

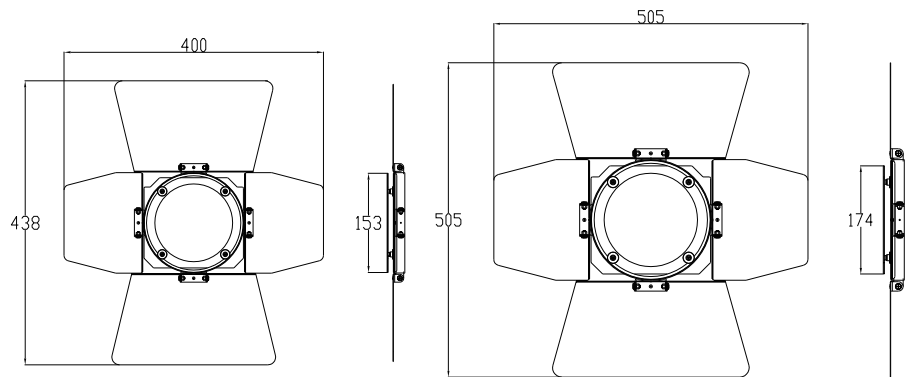
Socket



Lamp



Barndoor



Part Number	Description	Weight (kg)
FS-500	Fresnel spotlight 500/650W; lampholder GY9.5, Lamp: T18/500W; T26/650W, Black (take-out lampbase spacer for 650W)	4.08
FS-1000	Fresnel spotlight 1000/1200W; lampholder GX9.5, Lamp: T19/1000W; T29/1200W, Black (take-out lampbase spacer for 1200W)	5.86
PS-1000	Prism convex spotlight 1000/1200W; lampholder GX9.5, Lamp: T19/1000W; T29/1200W, Black (take-out lampbase spacer for 1200W)	6.41
Barndoor		
BDR-FS05	Barndoor for FS-500, Black	0.90
BDR-FS10	Barndoor for FS-1000, Black	1.18
Socket		
GY-9.5	Socket for FS-500	0.21
GX-9.5	Socket for FS-1000 and PS-1000	0.21
Lamp		
LFP-500	Lamp for FS-500	0.04
LFP-1000	Lamp for FS-1000 and PS-1000	0.07