

KEY FEATURES

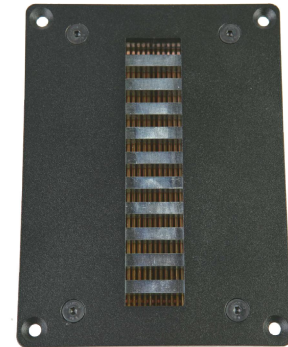
- Superior sound reproduction quality
- Extended frequency response (1 - 23 kHz)
- High sensitivity (99 dB)
- Extremely linear frequency response
- Low distortion
- Designed for the high frequencies reproduction

TECHNICAL SPECIFICATIONS

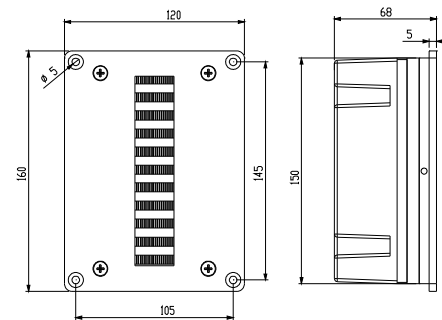
Rated impedance	8 ohms
D.C. Resistance	4.9 ohms
Power capacity *	80 w AES above 1 kHz
Program power	160 w above 1 kHz
Sensitivity **	99 dB 1 w @ 1m
Frequency range	1- 23 kHz
Recommended crossover	1 kHz or higher (12 dB/oct. min.)
Net weight	1.95 kg. 4.30 lb.
Overall dimensions	160 x 120 x 68 mm.
Cutout dimensions	6.30 x 4.72 x 2.68 in. 152 x 95 mm. 5.98 x 3.85 in.

Notes:

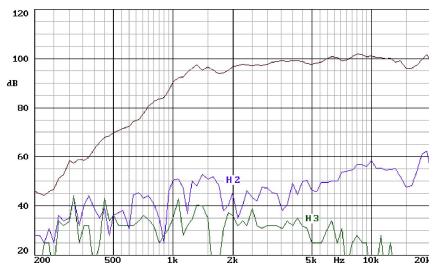
*The power capacity is determined according to AES2-1984 (r2003) standard.
Program power is defined as the transducer's ability to handle normal music program material.
**Sensitivity was measured at 1 m distance, on axis, with 1 w input, averaged in the range 2.5 - 20 kHz.



DIMENSION DRAWINGS

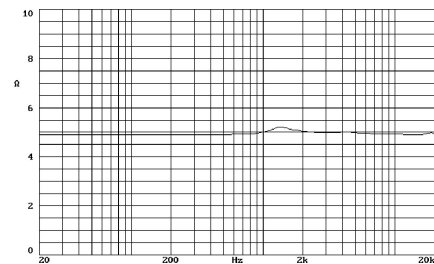


FREQUENCY RESPONSE AND DISTORTION

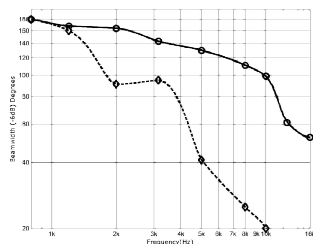


Note: on axis frequency response measured in anechoic chamber, 1w @ 1m.

FREE AIR IMPEDANCE CURVE

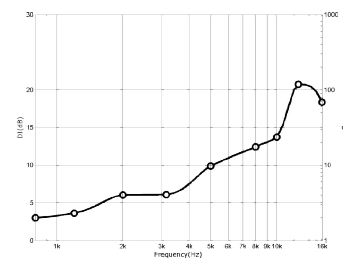


-6 dB BEAMWIDTH



Note: heavy line, horizontal beamwidth; discontinuous line, vertical beamwidth.

DIRECTIVITY INDEX



Polígono Industrial Moncada II · C/. Pont Sec, 1c · 46113 MONCADA - Valencia (Spain)

· Tel. (34) 96 130 13 75 · Fax (34) 96 130 15 07 · <http://www.beyma.com> · E-mail: beyma@beyma.com ·