

Portable Speakers

EUROLIVE B115D

Active 2-Way 15" PA Speaker System with
Wireless Option and Integrated Mixer

- High-Power 1000-Watt 2-way PA sound reinforcement speaker system for live and playback applications
- Ultra-compact and lightweight system delivers excellent sound even at extreme sound pressure levels
- "Wireless-ready" for high-quality BEHRINGER digital wireless system (not included)
- 2-channel mixer with individual Mic/Line inputs, Volume controls and Clip LEDs
- Dedicated 2-band EQ plus integrated sound processor for ultimate system control and speaker protection
- Revolutionary Class-D amplifier technology: enormous power, incredible sonic performance and super-light weight
- Extremely powerful 15" long-excursion driver provides incredibly deep bass and acoustic power
- State-of-the-art 1.35" aluminum-diaphragm compression driver for exceptional high-frequency reproduction
- Ultra-wide dispersion, large-format exponential horn
- Additional Line output allows linking of additional speaker systems



The EUROLIVE B115D active loudspeaker is exactly what you've come to expect from BEHRINGER—more power, more features and absolutely more affordable! Our engineers have really outdone themselves, creating a self-contained PA solution that merges state-of-the-art 1,000-Watt Class-D power amp technology, built-in wireless microphone capability and an amazing 2-channel mixer complete with individual Mic/Line input sections and exceptional portability. Then we loaded the B115D with our best 15" long-excursion driver for incredibly deep bass, and a state-of-the-art 1.35" aluminum-diaphragm compression driver for exceptional high-frequency reproduction. The professional B115D active loudspeakers is destined to become a legend in its own right, alongside the other EUROLIVE models that have made BEHRINGER the world leader in active loudspeakers.

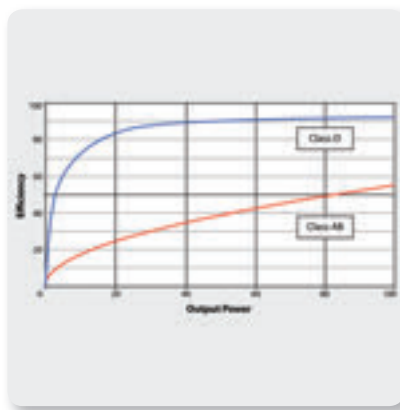


Portable Speakers

EUROLIVE B115D

Active 2-Way 15" PA Speaker System with
Wireless Option and Integrated Mixer

- Versatile trapezoidal enclosure design allows different positioning:
 - Stand mounting with 35-mm pole socket
 - Tilts on its side for use as a floor monitor
- Ergonomically shaped handles for easy carrying and setup
- 3-Year Warranty Program*
- Conceived and designed by BEHRINGER Germany



Class-D - Massive Power, Perfect Sound

Thanks to our revolutionary Class-D amplifier technology, we are able to provide you with enormous power and incredible sonic performance in an easy-to-use, ultra-portable and lightweight package. Class-D amplification makes all the difference, offering the ultimate in energy efficiency and eliminating the need for heavy power supplies and massive heat sinks. This amazing technology makes it possible to design and build extremely powerful products that are significantly lighter in weight than their traditional counterparts, while using less energy and protecting the environment.

Cut the Fat; Keep the Beef

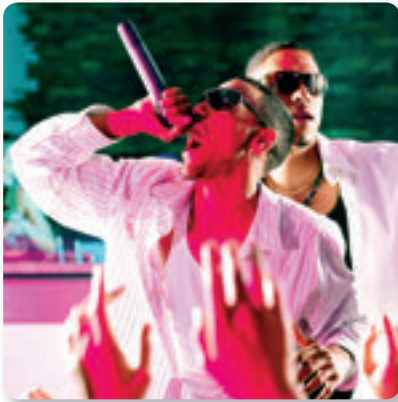
We drew from our considerable experience to build this performance-grade loudspeaker and made it lighter (38 lbs/17.2 kg) and more powerful. With custom-engineered Class-D power amps for the ultimate in power and efficiency, backed by SMPS (Switch Mode Power Supply) technology – the B115D loudspeaker can run cool all day and all night without even breaking a sweat – or your back!



Portable Speakers

EUROLIVE B115D

Active 2-Way 15" PA Speaker System with
Wireless Option and Integrated Mixer



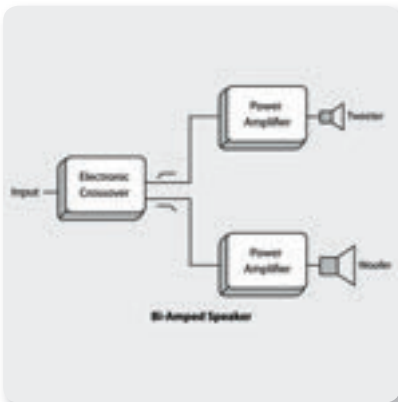
Own the Stage with Digital Wireless

Get wireless-ready with the built-in, dedicated connectivity of our **ULTRALINK ULM Series** wireless microphone system (to be ordered separately). Wireless gives you maximum freedom and mobility without the need to run cables. The highest-quality sound is provided thanks to the **ULM's** digital, license-free 2.4 GHz frequency spectrum.

The **ULM** wireless system combines professional-quality sound with simple setup and an intuitive interface for legendary audio performance right out of the box. Just plug in the **ULM** receiver "dongle", and instantly you have an exceptional wireless mic system. Freeing you from cables is the simply easy way to own the stage.

Built-in Mixing Capability

The B115D's integrated 2-channel mixer features the same ultra low-noise, high-headroom mic preamps that have made **BEHRINGER** mixers legendary, and the individual Mic/Line inputs accept virtually any level signal you're likely to run across. Variable Input gain controls (with Clip LED) will have you dialing in the perfect level every time. And if you need more coverage, use the convenient Link Output XLR connector to add more active loudspeakers.



Bi-Amplification - The Path to Absolute Signal Integrity

With its 1,000 ultra-clean Watts of digital output delivered through separately-powered drivers, courtesy of true bi-amping (2 amplifiers per speaker system), the B115D delivers high-resolution sound that really brings out the best in your music. While some of our competitors apply simple passive crossovers, which inaccurately separates the frequency spectrum and degrade driver performance, **BEHRINGER** has gone the extra mile – driving each woofer and tweeter with a separate amplifier for absolute signal integrity.

Portable Speakers

EUROLIVE

B115D

Active 2-Way 15" PA Speaker System with
Wireless Option and Integrated Mixer

Custom-Engineered Transducers

Powerful, high-efficiency Class-D amplifiers and Switch Mode Power Supply technology coupled with state-of-the-art DSP functionality sure sounds impressive—but what about the part of the system you actually hear? Our LF (Low Frequency) and HF (High Frequency) transducers are designed specifically for each application – it's what sets us apart from the competition. When you buy a **BEHRINGER** active loudspeaker, you can rest assured the transducers inside have been engineered to perform flawlessly with every other element for truly professional results. The B115D cranks out massive quantities of low end, with articulate, detailed mids and crystal-clear highs.



Extraordinarily Versatile

Thanks to its trapezoidal shape, the B115D is suitable for a wide variety of applications, including mounting on standard speaker poles, vertical placement atop subwoofers, or even laid on the side for use as onstage monitor wedges. The B115D's extraordinary fidelity and frequency response make it a favorite of vocalists and instrumentalists alike. Hookup is simple, requiring only a single XLR or ¼" cable from your mixing console and power. Additional active monitors can be chained together via the XLR Link Output jack on the rear panel.

Which Speaker Should I Buy?

Well, let's start with your application... are you giving a speech in a hotel ballroom – or rocking out at the local bar or dance club? Whether to choose one speaker cabinet over another depends on your bass requirements. A 15" woofer has about 40% more surface area with which to move air than a 12" and that translates into more bass. So if you're addressing a small meeting, or jamming at the coffee house, the **B112D** might be all you'll ever need. But if you're providing disco in a busy nightclub, hosting Karaoke night in your living room, or just need to crank it up louder, then the B115D may be a better choice.



Portable Speakers

EUROLIVE B115D

Active 2-Way 15" PA Speaker System with
Wireless Option and Integrated Mixer



Sound Value

The EUROLIVE B115D active PA loudspeaker stands head and shoulders above the rest of the pack, and delivers exceptional performance – even when pushed to the limit. Lightweight and powerful, with built-in mixers, custom-designed transducers, and integrated wireless functionality, the B115D is ideal for both speech and music applications – at a price that is unheard of in this class.

Experience the B115D at your local dealer today and find out why more and more professionals are turning to **BEHRINGER EUROLIVE Series** active loudspeakers for their superb performance and extraordinary value.

You Are Covered

We always strive to provide the best possible Customer Experience. Our products are made in our own **MUSIC Group** factory using state-of-the-art automation, enhanced production workflows and quality assurance labs with the most sophisticated test equipment available in the world. As a result, we have one of the lowest product failure rates in the industry, and we confidently back it up with a generous **3-Year Warranty program**.

