



**wePresent WiPG**  
Wireless interactive Presentation Gateway



# Quick Installation Guide

Model Name: WiPG-1000

Version: 1.0  
Date: Feb 3, 2012

## 1. Package Contents

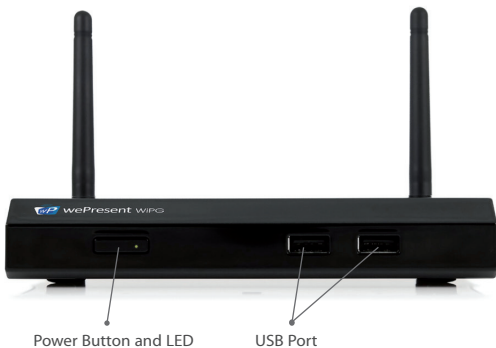
- WiPG-1000 device
- Plug&Show USB token
- Power Adapter (DC +5V, 2.5A)
- WiFi Antenna x 2
- Quick Installation Guide
- Warranty Card

## 2. USB Token Contents

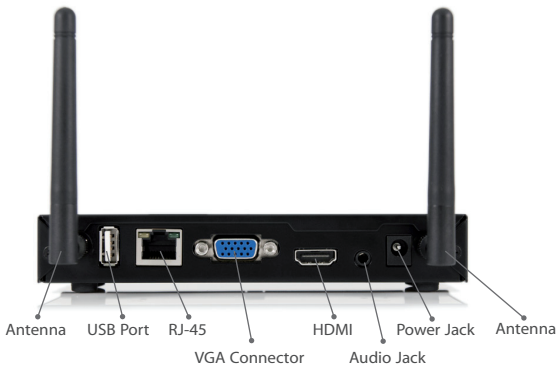
- Windows Installer (WiPG-1000 Windows Installer)
- MAC Installer (WiPG-1000 Mac Installer)
- VAC Driver (For Windows XP Audio Projection)
- VDD Driver (For Windows Virtual Extended screen)
- USBolP Driver (For IWB feature)
- Manual
- Utility
  - PtG Converter (For MobiShow PtG function)
  - SNMP Manager (For SNMP Management)

## 3. Physical Details

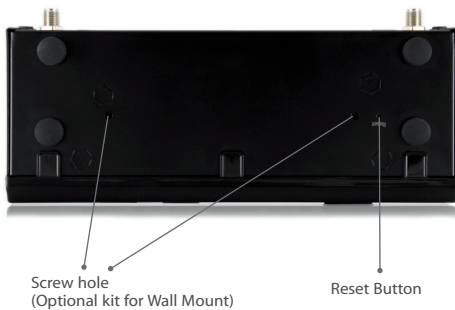
- Front Panel



- **Rear Panel**



- **Bottom Side**

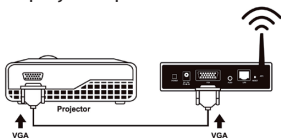


## 4. What You Might Need

- Projector or HDTV with VGA/HDMI interface
- Windows or Mac PC/Laptop
- Apple iPhone, iPad or iPod-touch device
- Android Phone or Tablet device
- Speaker (Optional, for audio projection feature)
- USB Mouse and Keyboard (Optional, for remote desktop feature)
- USB HID IWB Device (Optional, for IWB over IP feature)

## 5. WiPG-1000 Quick Installation










1. Connect wePresent WiPG-1000 device to Projector through VGA port and turn on projector power.



2. Connect the power adaptor to WiPG-1000 device and press the power button to turn on WiPG-1000 device.
  - It will show the default standby screen as below on projector when system is ready.

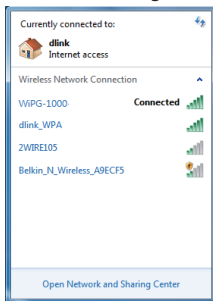


## WiPG-1000 Features Highlight:

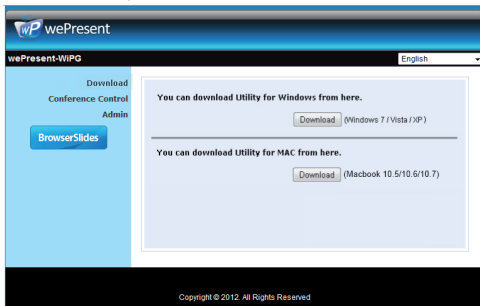
Icon	Feature	Description
	DoWiFi	No more wires ... Display-over-WiFi for Windows & Mac
	Plug&Show	No software installation required. Just plug in the USB drive to your PC.
	MobiShow	Interactive PPT presentation via iPhone/iPad or Android devices
	WiFi-Doc	High quality presentation via iPhone/iPad or Android devices
	SidePad	Control the presentation on PC or Mac via iPhone/iPad or Android devices
	BrowserSlides	Broadcast slides to your devices with WiFi and web browser
	4-to-1 projection	Project four PC/Mac screens to one projector at once.
	Conference Control	Open WiPG's web page to control screen projection centrally. Or use mouse/keyboard to select a PC to show from WiPG's UI.
	SNMP Manager	Use the SNMP manager to manage WiPG devices across the network.

## 6. DoWiFi for Windows

1. Make sure your PC WiFi is enabled already, and connect your PC to wePresent WiPG-1000 box through WiFi.




2. Open your browser and enter the IP address shown on the left corner of projector screen to access the wePresent WiPG-1000 web home page. (Default IP: 192.168.100.10)
3. Download the client software for "Windows 7/ Vista / XP" and install on your PC. (Ps. You can also launch the application from PnS token directly.)



4. Launch WiPG-1000 client and connect to WiPG-1000 receiver.  
 (Make sure your personal firewall allows wePresent WiPG-1000 software to pass through.)
5. Enter the **CODE** and
  - ◆ You can see the Code on the projector standby screen



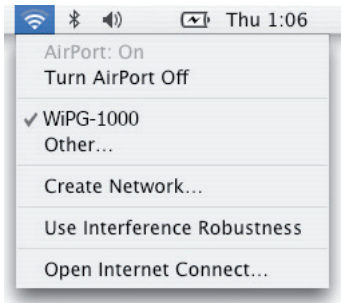
6. Click the  button to start full screen projection, or choose one of the numbers (1 to 4) to project to the split screen.



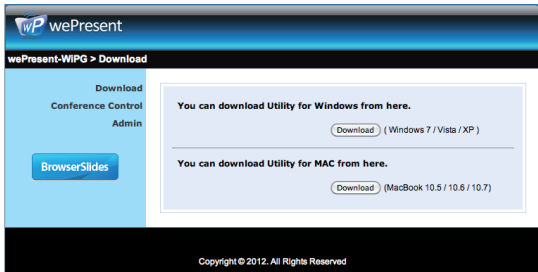
7. Use the mouse/keyboard connects to the Box to select a PC and control the PC/Mac desktop remotely.

## 7. DoWiFi for Mac

1. Enable your WiFi and connect to wePresent WiPG-1000 WiFi network.

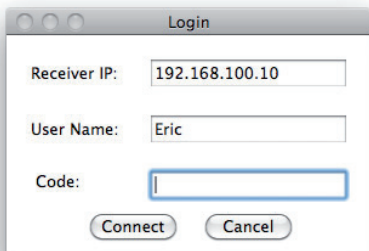


2. Open your browser and enter the IP address shown on the left corner of projector screen to access the wePresent WiPG-1000 web home page. (Default IP: 192.168.100.10)
3. Download the client software and execute the installation application.





4. Launch wePresent WiPG-1000 software, connect the WiPG-1000 device and enter the Code.



5. Click the  button to start projection.

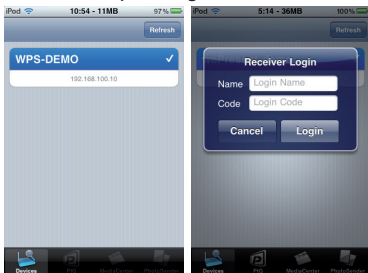




6. Use the mouse/keyboard connects to the Box to select a PC and control the PC/Mac desktop remotely.

## 8. MobiShow for Apple iOS Device



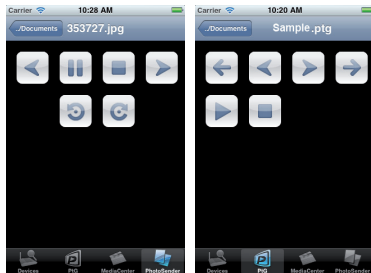
- Download “MobiShow” from App Store
- Connect to WiPG-1000 device
  - A. Enable the WiFi and connect to the Access Point where the WiPG-1000 device connected.
  - B. Select “MobiShow” icon and launch the client software.
  - C. Connect to WiPG-1000 device, it will popup the login page. Enter the code and press login.



- Project Photo  / PtG  to projector  
 Open and select the photo/PtG file, then project it on the big screen through WiPG-1000 device.

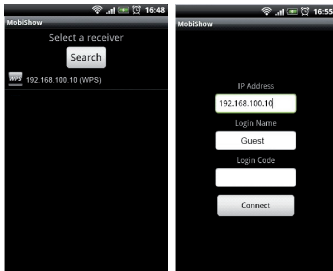
**Note:**



You need to use “PtG converter.exe” to convert PowerPoint to the PtG file first.



## 9. MobiShow for Android Device

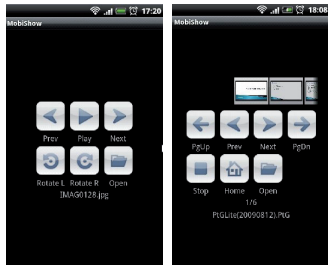
- Download “MobiShow” from Google Play
- Connect to WiPG-1000 Device
  - A. Enable the WiFi and connect to the Access Point where the WiPG-1000 device connected.
  - B. Select “MobiShow” icon and launch the client software.
  - C. Connect to WiPG-1000 device, it will popup the login page. Enter the code and press login.



- Project Photo  / PtG  to projector  
 Open and select the photo/PtG file, then project it on the big screen through WiPG-1000 device.

**Note:**

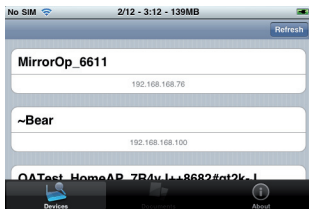
You need to use “PtG converter.exe” to convert PowerPoint to the PtG file first.



## 10. WiFi-Doc for Apple iOS Device

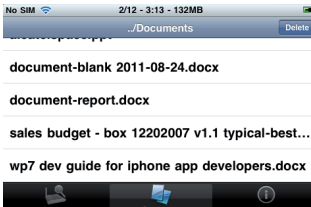


- Download “WiFi-Doc” from App Store
- Connect to WiPG-1000 device
  - A. Enable the WiFi and connect to the Access Point where the WiPG-1000 device connected.
  - B. Select “WiFi-Doc” icon and launch the client software.
  - C. Connect to WiPG-1000 device, it will popup the login page. Enter the code and press login.



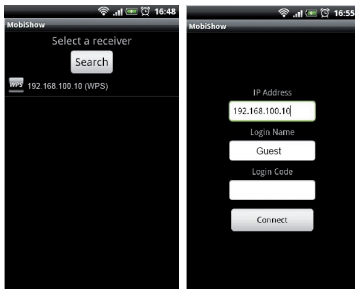
- Project Documents to projector
 

Open and select the document file, then project it on the big screen through WiPG-1000 device. (Word, Excel, PPT, PDF)



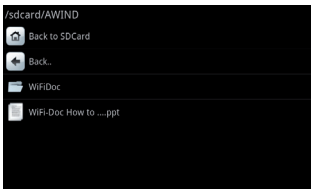
## 11. WiFi-Doc for Android Device

- Download “WiFi-Doc” from Google Play
- Connect to WiPG-1000 device
  - A. Enable the WiFi and connect to the Access Point where the WiPG-1000 device connected.
  - B. Select “WiFi-Doc” icon and launch the client software.
  - C. It will popup the login page, enter the code and press login.



- **Project Documents**

Open and select the document file, then project it on the big screen through WiPG-1000 device. (Word,Excel,PPT,PDF)



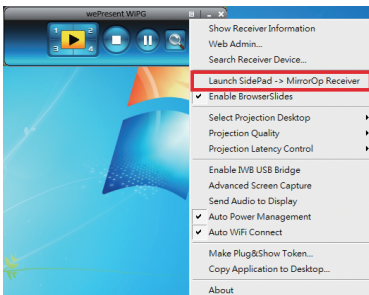
## 12. SidePad

### SidePad Control from iPad/iPhone.

- Download “MirrorOp Receiver” from App Store
- Connect to WiPG-1000 device through WiFi and Launch “MirrorOp Receiver”



- Open the main menu of the WiPG-1000 application(Win/Mac), and choose the item, “Launch SidePad -> MirrorOp Receiver”



- In seconds, you shall see the PC desktop shown on the iOS Device. Use two fingers to pinch or one finger to pan the desktop image and control it by single or double clicks!



## SidePad Control from Android Device.

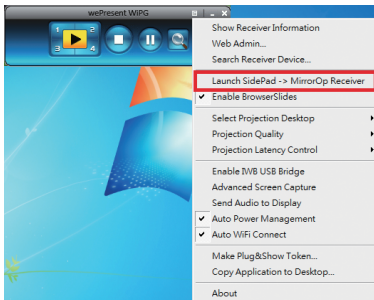
- Download “MirrorOp Receiver” from Android Market
- Connect to WiPG-1000 device through WiFi and Launch “MirrorOp Receiver”



Name: (awindinc.tw) MOP Android Receiver  
 Waiting for connection at: 192.168.168.163



- Open the main menu of the WiPG-1000 application(Win/Mac), and choose the item, “Launch SidePad -> MirrorOp Receiver (SidePad)”



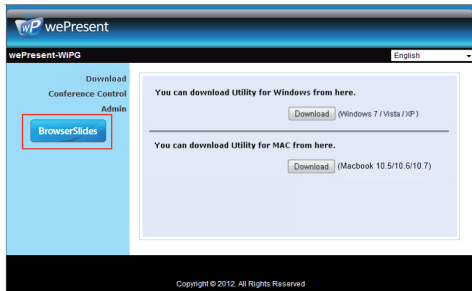


- In seconds, you shall see the PC desktop shown on the Android Device. Use two fingers to pinch or one finger to pan the desktop image and control it by single or double clicks!



### 13. BrowserSlides

- Audience:
  - A. From audience's mobile device, connect its WiFi to the "WiPG-1000" device, then launch the browser
  - B. Enter WiPG1000 IP Address (Default: 192.168.100.10) on the URL of browserClick the "BrowserSlides" button



### C. Start to receive the speaker's slides (Auto refresh every 30 sec)

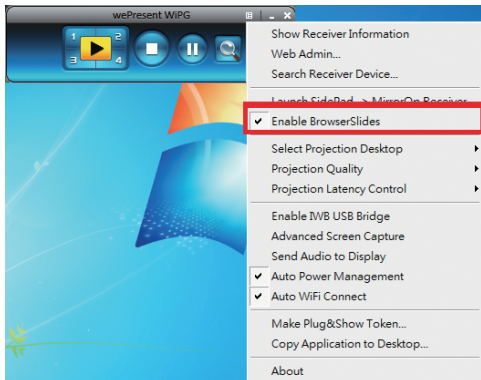
▶ Connect WiFi of your mobile device to WiPG-1000  
 ▶ Open your web browser, and type in the IP address of WiPG-1000  
 ▶ View the presenting slides on your device ... save the slides as JPG files for note-taking, annotation or others!  
 ▶ *A new way of paper-less meeting!*

Windows NB    Android Tablet    Mac Book    iPad    WM Phones    iPhone    Android Phones    Mango Phones    BlackBerry Phones

**AWIND**

- **Speaker:**

A. Open the main menu of the WiPG-1000 PC application (Win/Mac), and choose the item, "Enable BrowserSlides"; then it will start to broadcast your slides to mobile device.



If the product is damaged or has malfunctions not caused by human error, please consult your product manual first. If you require technical support information, please visit our web site at: <http://www.awindinc.com>

## The warranty does not apply to any of the following

- (1) Damages caused by accident, overloading, misuse, improper use or other types of damage not related to this product quality or design.
- (2) The machine is damaged by unforeseeable natural disasters (flooding, fire hazard, earthquake, typhoon or thunder) or causes due by human error.
- (3) Attempt to open product housing, dismantle, attach other items or retrofit without written permission from Awind.
- (4) Consumables or components.
- (5) Serial number on the product or component has been removed or damaged.
- (6) The product warranty is outdated.
- (7) Claims without presenting a warranty certificate, or if presented but the warranty certificate is not properly marked with the date of purchase, stamped by the authorized agent or the marked information has been tempered with.

## Warranty Services

If any fault has developed during the warranty period, after confirmation by Awind, we will (1) Repair the product directly. (2) Replace with a brand new product or refurbished item. Applicable to all products; when sending the product for services, you need to provide:

- (1) Your name, address and telephone number.
- (2) The original copy of warranty certificate where it must be stamped by the dealer and properly marked with the date of purchase and the correct matching serial number.
- (3) If the warranty certificate has not been stamped by your local dealer, you may present the original bill receipt where is clearly printed with details of the product. If you are unable to provide above information, we will regard the warranty period to start from the date of dispatch from the factory.

## Disclaimer

- We will not be responsible if it's believed the damage is caused by the customer, or other personnel, deliberately or by accident.
- We will not be responsible for any loss caused by continuous use or inability to use the product.
- We will not be responsible for costs due to damage other than repairs to Awind products. Any damage or malfunction caused to other machines linked to Awind products is not covered by this warranty.



wePresent WIPG

# Warranty Policy

---

Name:	Product No.
Purchasing Date:	Product Name:
Address:	Serial No.
	Shop:
TEL:	
FAX:	
Email:	