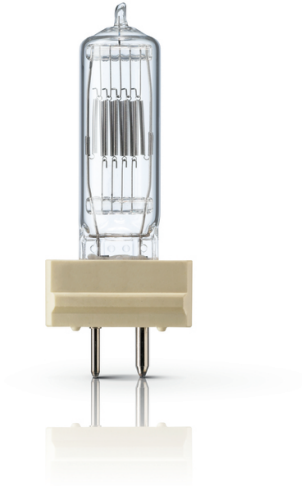


Halogen High Voltage SE (Film/Studio)

6994P 2000W GY16 230V 1CT/10



The high, constant output and consistent color temperature of these single ended halogen lamps ensure attractive, accurately exposed pictures for both film and video. Furthermore, these lamps incorporate the highly innovative P3 technology, developed by Philips. This allows the lamps to be used at higher temperatures, which extends overall lifetime and consistency of their high-quality light output. P3 technology also allows the lamp to be used in any burning position and enables more compact designs of fixtures. In addition, the very wide choice of dimensions and power ratings opens new levels of creative freedom for the luminaire designer.

Product data

• General Information

Cap-Base	GY16 [GY16]
Philips Code	6994P
Ansi Code	FTM
LIF Code	CP/72 (CP/43)
Operating Position	S90 [Standing +/-90D or Base Down (BDH)]
Main Application	Entertainment
Life To 50% Failures (Nom)	480 h
System Description	na [-]

• Light Technical

Luminous Flux (Rated) (Nom)	50000 lm
Correlated Color Temperature (Nom)	3200 K

• Operating and Electrical

Power (Rated) (Nom)	2000 W
Rapid Acting HBC Fuse	16 V
Voltage (Nom)	230 V

• Controls and Dimming

Dimmable	Yes
----------	-----

• Mechanical and Housing

Bulb Finish	Clear
Filament Shape	Bi-Plane
Filament Dimensions WxH	18x18

• Luminaire Design Requirements

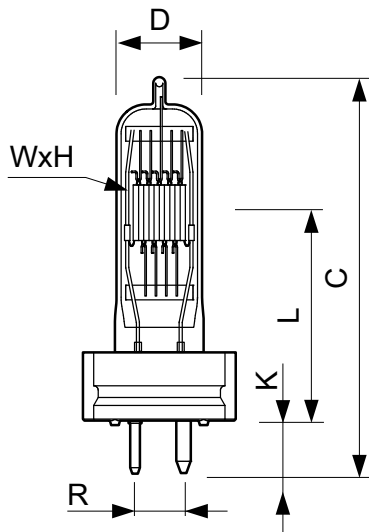
Pinch Temperature (Max)	400 °C
-------------------------	--------

• Product Data

Full product code	871150018583925
Order product name	6994P 2000W GY16 230V 1CT/10
EAN/UPC - Product	8711500185839
Order code	923891042948
Numerator - Quantity Per Pack	1
Numerator - Packs per outer box	10
Material Nr. (12NC)	923891042948
Net Weight (Piece)	0.073 kg

PHILIPS

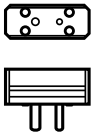
Dimensional drawing



GY16

6994P 2000W GY16 230V

Product	D	H	W	L	C	R	K	K
6994P 2000W GY16 230V 1CT/10	29 mm	18.5 mm	17 mm	70 mm	145 mm	15.87 mm	17 mm	15.4 mm



© 2015 Koninklijke Philips N.V. (Royal Philips)
All rights reserved.

Specifications are subject to change without notice. Trademarks are the property of Koninklijke Philips N.V. (Royal Philips) or their respective owners.

www.philips.com/lighting

2015, December 23
data subject to change