

# X LED Display System

With the increasing demand on creative LED display solution, HUASUNY launches the revolutionary LED display - X LED Display System. Besides excellent LED display function and high quality, we endeavor to create the one of a kind user experience that help all partners to achieve creative and incomparable visual effect. By redefining the LED display function, X LED Display System will surely expand your business and change your career blueprint.

X LED display system include three types of products: X Panel, X Rover, X Rover Pro, Each product can be used independently or combined as mixture to fulfill all your imagination and solution for creative application. We always believe that every progress of the world comes from change.



## Simple Panel, Multiple Application !

X Panel is Huasuny's latest high definition LED display for rental performance. It is all made with durable and light weight magnesium alloy, easy and quick for setup, circle and curve installation, simple maintenance for module and power.

Fantastic appearance design, careful material selection and exquisite manufacturing process enable X Panel to be a reliable and safe choice for any high-end applications, such as indoor and outdoor stage performance, TV studio, shopping mall, car showroom and airport, etc.



### Multiple Function Design

- Optional choices for visual & lighting application with movable body.

### Light Weight Material

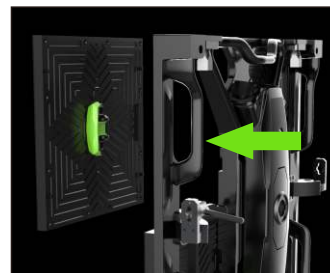
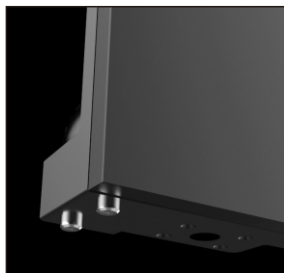
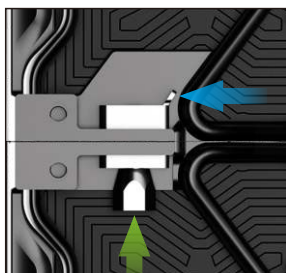
- Weight 7kg/panel, made by magnesium alloy.

### Cable Free Structure

- Clean design without outside power box & signal cables.

### Easy Set-up and Maintenance

- Fast-lock cabinet, with standardized push-out panel with magnetic connection.



## Indoor and Outdoor Application

> IP 65 rating, can be used both indoor and outdoor.



## Flexible Panels

> Flexible shape installation : circle, convex, concave., etc







## Specification

X Panel	X 2.9	X 3.9
Pixel pitch	2.9 mm	3.9 mm
LED model	250x250 mm	250x250 mm
Pixel density	112,896 pixels/m <sup>2</sup>	65,536 pixels/m <sup>2</sup>
Module resolution	168x168 pixels	128x128 pixels
Panel size	500x500x94 mm	500x500x94 mm
Brightness	1,200 nits	1,200 nits
View angle (Hor / Vert)	120° / 120°	120° / 120°
Refresh rate	3,120 Hz	3,120 Hz
Contrast	5,000:1	5,000:1
Scan mode	1 / 21	1 / 16
IP rating	IP42	IP42
Color Processing	16 bit	16 bit
Colors	281 trillion	281 trillion
Panel weight	7.5 kg	7.5 kg
Power consumption	162 W / tile	162 W / tile
Power consumption	650 W/m <sup>2</sup> max 260 W/m <sup>2</sup> typical	650 W/m <sup>2</sup> max 260 W/m <sup>2</sup> typical
Max power supply cascade	12 tiles (100-180 V) 22 tiles (180-240 V)	12 tiles (100-180 V) 22 tiles (180-240 V)
Curve(optional)	- 10° ~ + 5°	- 10° ~ + 10°
Max stacking	12 tiles	
Max hanging	20 tiles	
Life span	≥ 50,000 H	
Used for X Rover & X Rover Pro	Yes	
Body material	Magnesium alloy	
Operating temper / Humidity	- 40 ~ + 60 °C / 10% ~ 90% RH	
Storage temper / Humidity	- 40 ~ + 60 °C / 10% ~ 90% RH	
Signal input	AV, S-Video, VGA, CVBS, HDMI, DVI	
Power input	100~240 VAC / 50~60 Hz	
Control system	Nova star	
Maintenance	Front & Back	
Certificate	CE, FCC, Rohs	

XO Panel	XO 3.9	XO 4.8	XO 5.9
Pixel pitch	3.9 mm	4.8 mm	5.9 mm
LED model	250x250 mm	250x250 mm	250x250 mm
Pixel density	655,366 pixels/m <sup>2</sup>	43,264 pixels/m <sup>2</sup>	28,224 pixels/m <sup>2</sup>
Module resolution	128x128 pixels	104x104 pixels	84x84 pixels
Panel size	500x500x94 mm	500x500x94 mm	500x500x94 mm
LED type	SMD RGB 1921 Black (Nation star)	SMD RGB 1921 Black (Nation star)	SMD RGB 2727 Black (Nation star)
Brightness	2,900 nits (Black) 4,500 nits (White)	2,900 nits (Black) 4,500 nits (White)	4,500 nits
View angle (Hor / Vert)	120° / 120°	120° / 120°	120° / 120°
Refresh rate	3,120 Hz	3,120 Hz	3,120 Hz
Contrast	5,000:1	5,000:1	5,000:1
Scan mode	1/16	1/13	1/7
IP rating	IP 65	IP 65	IP 65
Color Processing	16 bit	16 bit	16 bit
Colors	281 trillion	281 trillion	281 trillion
Panel weight	7.6 kg	7.6 kg	7.6 kg
Power consumption	165 W/ tile	165 W/ tile	165 W/ tile
Power consumption	660 W/m <sup>2</sup> max 265 W/m <sup>2</sup> typical	660 W/m <sup>2</sup> max 265 W/m <sup>2</sup> typical	660 W/m <sup>2</sup> max 265 W/m <sup>2</sup> typical
Max power supply cascade	12 tiles (100-180 V) 22 tiles (180-240 V)	12 tiles (100-180 V) 22 tiles (180-240 V)	12 tiles (100-180 V) 22 tiles (180-240 V)
Curve(optional)	- 10° ~ + 10°	- 10° ~ + 10°	- 10° ~ + 10°
Max stacking	12 tiles		
Max hanging	20 tiles		
Life span	≥ 50,000 H		
Used for X Rover & X Rover Pro	Yes		
Operating temp / Humidity	- 40 ~ + 60 °C / 10% ~ 90% RH		
Storage temp / Humidity	- 40 ~ + 60 °C / 10% ~ 90% RH		
Body material	Magnesium alloy		
Signal input	AV, S-Video, VGA, CVBS, HDMI, DVI		
Power input	100~240 VAC / 50~60 Hz		
Control system	Nova star		
Maintenance	Front & Back		
Certificate	CE, FCC, Rohs		

## Typical Application

- > Indoor stage performances
- > Outdoor stage performances
- > TV studio
- > Exhibition
- > High-end shopping malls
- > Car showroom
- > Airport
- > Fashion store/show
- > Theme resort