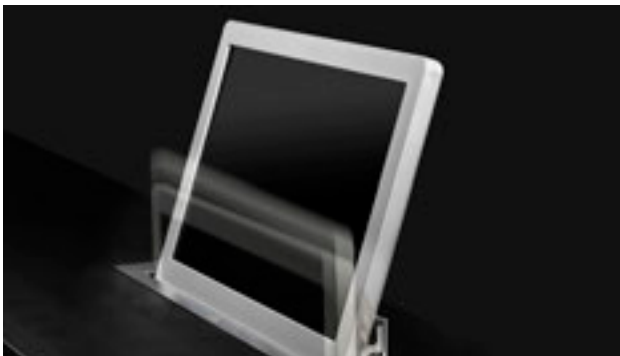
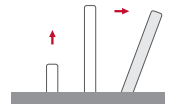


## DynamicX2

Aluminium retractable motorised monitor



### FEATURES

- Automatic 20° inclination
- Passive cover plate
- Interactive Setup Display
- Maintenance free
- HDCP compliant
- Energy saving design
- Serial control & Remote diagnose
- Individual monitor addressing
- Integrated terminations switch

### GENERAL

DynamicX2 monitors have been designed for installation into tables or desks.

DynamicX2 are elegant monitors built from a solid aluminium block. They have a vertical motorised movement with automatic 20° inclination to ensure the best ergonomics, viewing angle and visibility. This automatic tilting system provides a fast and silent response and highly reliable, maintenance-free solution. DynamicX2 have slightly curved edges for a contemporary and longstanding look. The range is available from 15" to 22" and it can be supplied with adjustable tilt, touch screen, camera, single or double retractable microphones, speakers, voting system and multimedia connectors among others.

The anodised aluminium housing can be customised in different colours and finishes. The safety system stops the movement if any resistance is detected for a secure environment.

The standard top-table cover plate is made of brushed stainless steel. It can optionally be supplied with a matt finish or it can disappear when the product is prepared for underneath installation.

DynamicX2 monitors are remotely controllable and diagnosable through the ERT interfaces in an easy and cost effective way.

ARTHUR HOLM

Albiral Display Solutions SL · Fàtima, 25 Sant Hipòlit de Voltregà 08512 Bcelona, Spain · +34 938 502 376 · marketing@arthurholm.com  
www.arthurholm.com

Arthur Holm is a registered brand of Albiral Display Solutions SL. Specifications subject to change without previous notice.

## TECHNICAL SPECIFICATIONS

**Display**

Size	15.6" TFT Active Matrix
Resolution	1366 (h) x 768 (v)
Brightness	300 cd/m2
Contrast ratio	500:1
Pixel	0.252 (h) x 0.252 (v) mm
Viewing angle	80°/80° (u/d) / 85°/85° (l/r)
Viewing area	344.232 (h) x 193.536 (v) mm
LED backlight lifespan	50.000 hrs
Response time	Tr 6 ms, Tf 2 ms
Temperature (operating/storage)	Operating 0°C – +40°C Storage -20°C – +60°C

**Materials**

Frame	Anodised Aluminium
Cover plate	Stainless steel, matt or prepared for underneath installation (to be veneered or for table hedge)

**Connectivity**

Input signal	DVI-I (1 input) – HDCP Compliant - Digital / Analog DVI-D (1 input) – HDCP Compliant - Digital
RJ45 CAT5 (with loop)	Addressable RS422 monitor control by AHnet protocol
GPI (SubD9)	Up/Down control

**Control**

RJ45, RS-422 (I/O)
Addressing
Termination switch
GPI
IR Remote control (monitor adjustments): 1 / 5

**Movement's Control**

User interface on monitor	(Up/Down)
Remote	RS-422 I/O/GPI

**Electrical**

Low voltage (external power supply)	100-240Vac, 47/63Hz, 12Vdc
Power consumption	40W

**Mechanical**

Monitor Dimensions:	
Screen	403 x 234 x 25 mm [15.87"x9.21"x0.98"]
Upper cover plate	500 x 95 x 3 mm [19.69"x3.74"x0.12"]
Housing below the table	485 x 590 x 80 mm [19.09"x23.23"x3.15"]
Weight	17.1 kg / 37.6 lbs
Shipping Dimensions:	
Weight	18.1 kg / 39.9 lbs
Shipping Box	612 x 177 x 727 mm

## OPTIONS

- HDMI/ DynamicLoop
- DynamicShare
- Stainless steel box for keyboard and mouse
- Matte cover plate
- Touch screen
- USB camera
- Composite video camera
- HD-SDI camera
- Built in DynamicTalk
- Motorised retractable synchronised single microphone
- Dual motorised synchronised microphones
- USB integrated on cover plate
- 2 USB integrated on cover plate
- USB power integrated on cover plate
- Customised cover plate with speaker, voting system, USB connector
- Prepared for underneath installation, cover plate prepared to be veneered
- Additional customised laser engraved logotype on the cover plate
- Monitor housing anodised in different colours
- Adjustable tilt

## CERTIFICATIONS

- CE

## WARRANTY

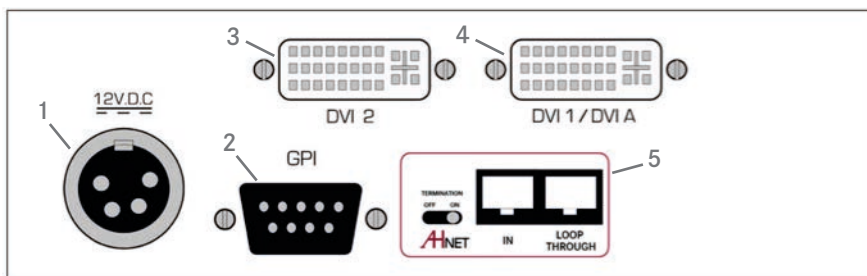
- 5 years limited warranty
- 2 years general warranty

ARTHUR HOLM

Albiral Display Solutions SL · Fàtima, 25 Sant Hipòlit de Voltregà 08512 Bcelona, Spain · +34 938 502 376 · marketing@arthurholm.com  
www.arthurholm.com

Arthur Holm is a registered brand of Albiral Display Solutions SL. Specifications subject to change without previous notice.

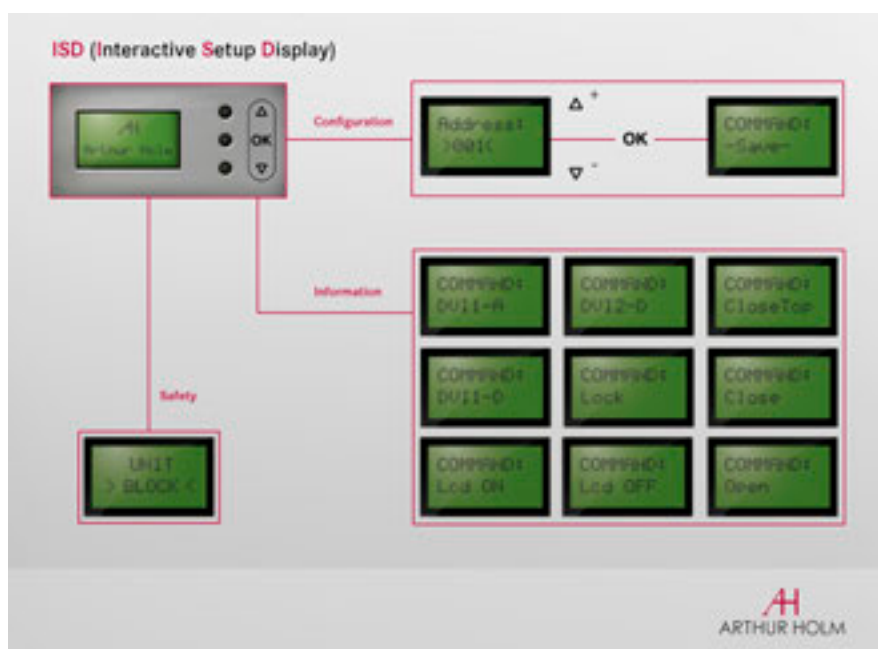
## CONNECTIVITY PANEL



### CONNECTIVITY

- 1- Power input
- 2- GPI control
- 3- DVI-D video input - digital
- 4- DVI-I video input - analog/ digital
- 5- AHnet control interface

## INTERACTIVE SETUP DISPLAY



### ISD

- 1- Configuration
- 2- Information
- 3- Safety

## ARCHITECT'S SPECIFICATIONS

Low voltage professional electrically retractable 15.6" monitor with 20 degrees of automatic inclination. Solid block of aluminium monitor housing in natural anodized finishing, with rounded corners design. Passive opening cover plate for enhanced reliability. DVI-I and DVI-D connectors, HDCP compliant inputs.

Compatible with AHnet open protocol over RS-422, allowing individual remote control of up to 30 units per line over a daisy chain CAT-5 or CAT-6 line and control up to 900 monitors using the AHnet Control System. Additional control by means of the buttons integrated on the cover plate that can be activated or deactivated by

using the AHnet protocol. Easy to read Interactive Set-Up Display (ISD) 1.6" LCD display for address setup and status monitoring. Dual Pulse Time safety system that detects obstructions, stopping the unit. External power supply with 4-Pin XLR4 connector.

Bottom connectivity for easy access and removal of monitor. Monitor housing total depth is 590 mm, plus additional spacing for connectors. Adjustable parameters through AHnet or ISD allowing calibration and adjustment of mechanics. Diagnostic readout on ISD for service and support.

GENERAL DIMENSIONS

AH15DX216A

